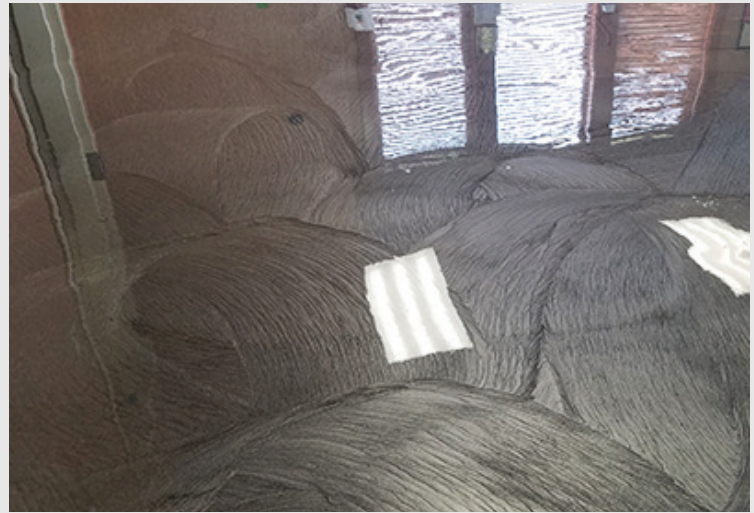
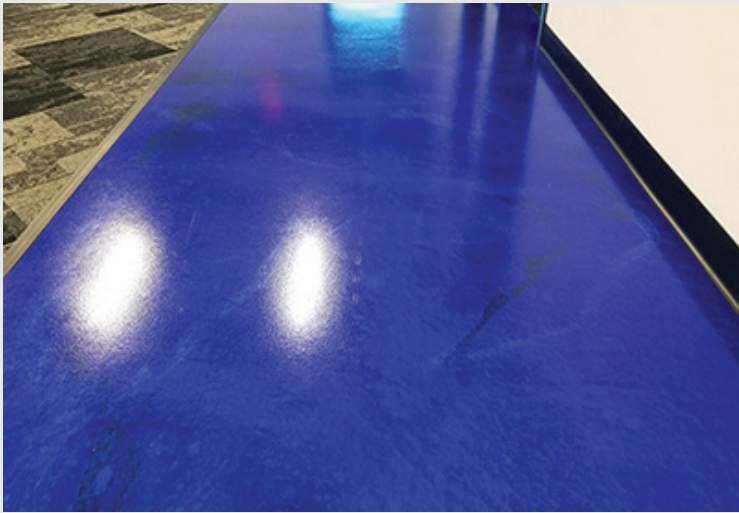


ArtisanFX Flooring Systems





Typically applied by a more artistically inclined applicator, ArtisanFX flooring systems are liquid applied decorative systems that create a unique, elegant looking floor. We offer two types which provide different looks:

System Description

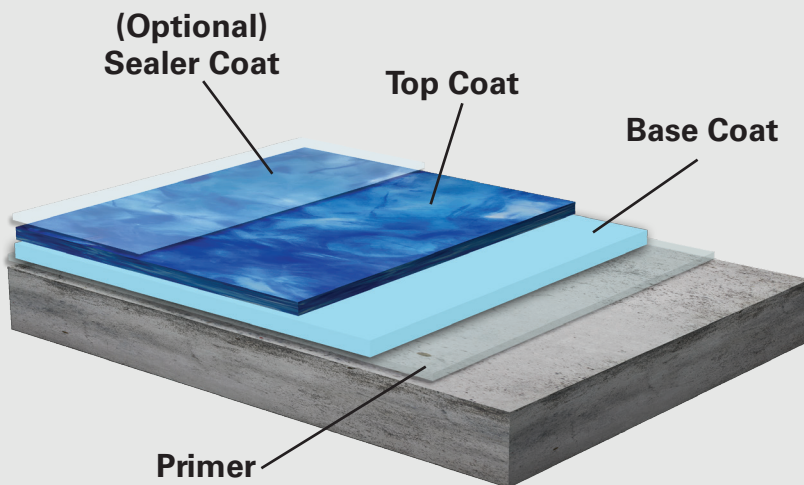
MetallicFX coatings use metal pigments to produce a shimmery, more opaque coating that typically does not require a base coat.

MicaFX coatings use semi transparent mica pigments that produce a multi-dimensional effect. Due to the semi-transparency of the pigment, a base coat is required.

Application Summary

Components are 2-3K products that are mixed on site and typically applied with a notched trowel, squeegee, or roller to create a smooth, glossy floor.

MicaFX



Components

Primer: BondTite 1101

Base Coat: LiquaTile 1184 or EnduraShield 4104

Top Coat: DecoFX 1110 + MicaFX 0150

Optional Sealer Coat: EnduraShield 2254 or EnduraShield 4104

ArtisanFX Flooring Systems

SYSTEMS



System Preferences

ArtisanFX: MetallicFX Products (contains metal, doesn't require a base coat)

MicaFX Products (semi-transparent with a large color variety, requires a base coat)

Base Coat (for MicaFX only): LiquaTile 1184 (pigmented) or EnduraShield 4104 (fast curing)

Sealer Coat (optional): DecoFX 1110 or EnduraShield 2254 (Improved Scratch & UV Resistant)

Texture

Optional with aggregate: SpheriTex (slip resistance), WearResist (wear resistance)

Common Applications

Warehouse, break rooms, clean rooms, changing rooms, restaurants, dining areas, hospitals, operating rooms, lobbys, pharmacies, classrooms

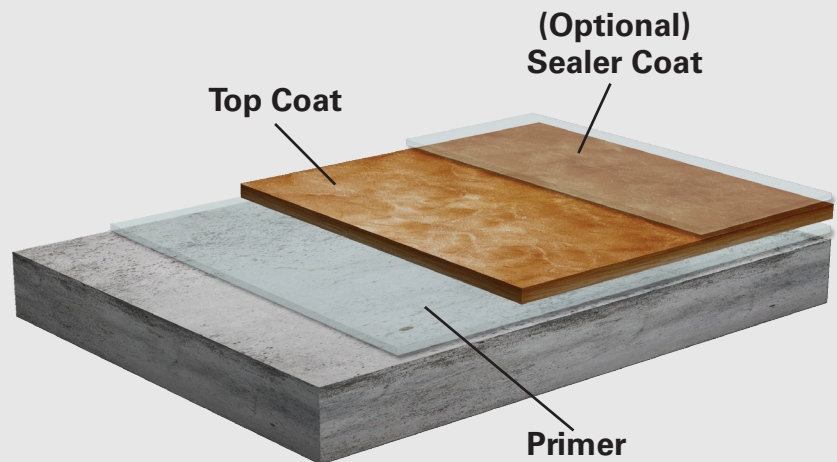
MetallicFX

Components

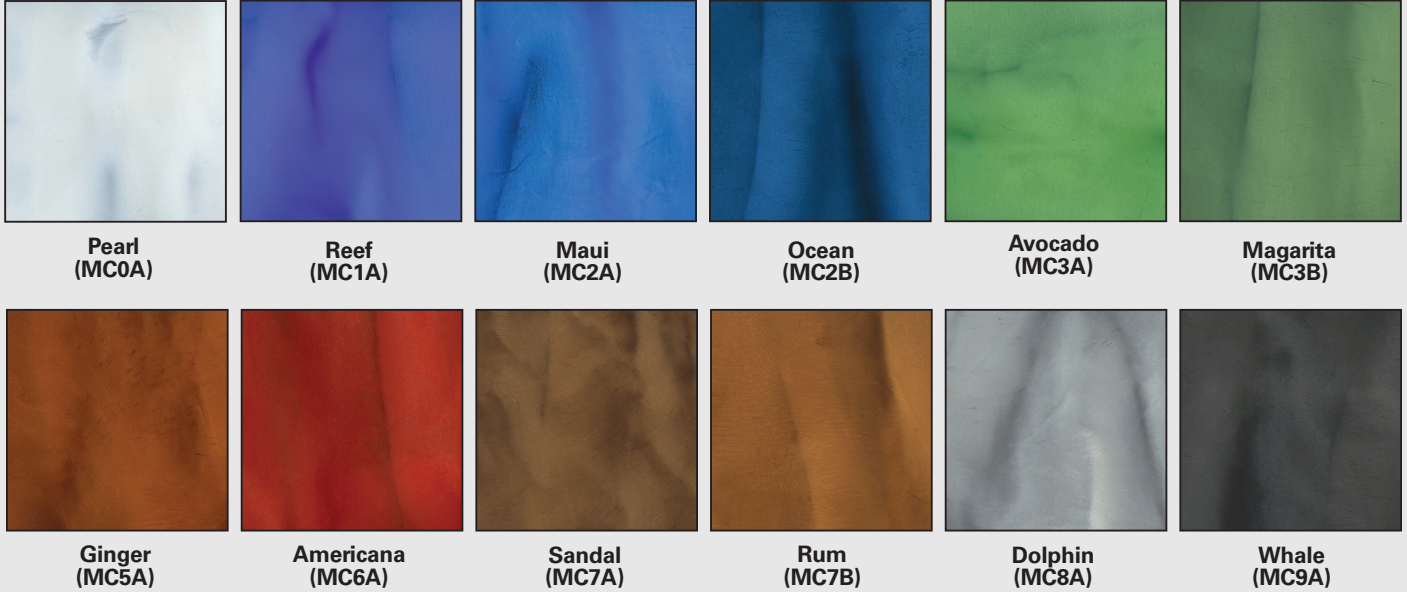
Primer: BondTite 1101

Top Coat: MetallicFX 1111

Optional Sealer Coat: EnduraShield 2254
or EnduraShield 4104

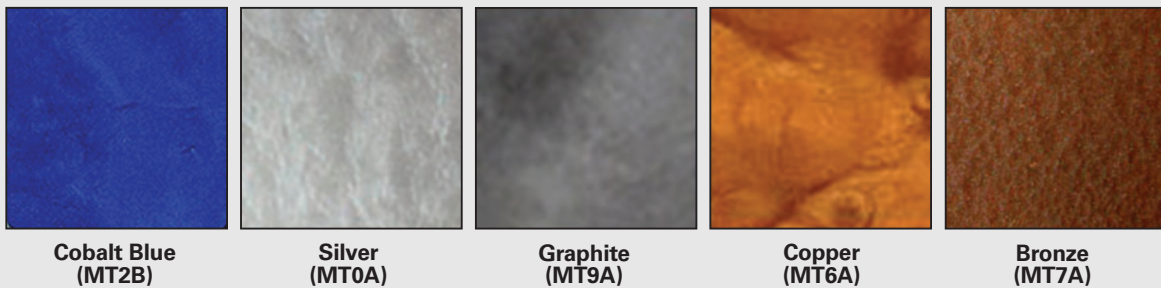


MicaFX 0150



* Custom colors available upon request

MetallicFX 1111



Color charts have been optimized to show colors as accurately as possible. Due to screen and printing limitations, you should consult your local Wolverine Coatings Corporation representative when color is critical or if custom blends or matching is desired.



Wolverine Coatings Corporation
 5969 Highway 221 | Roebuck SC, 29376
 Tel: (864) 587-3144 | Fax: (864) 587-3147
 E-mail: Sales@WolverineCoatings.com
 WolverineCoatings.com