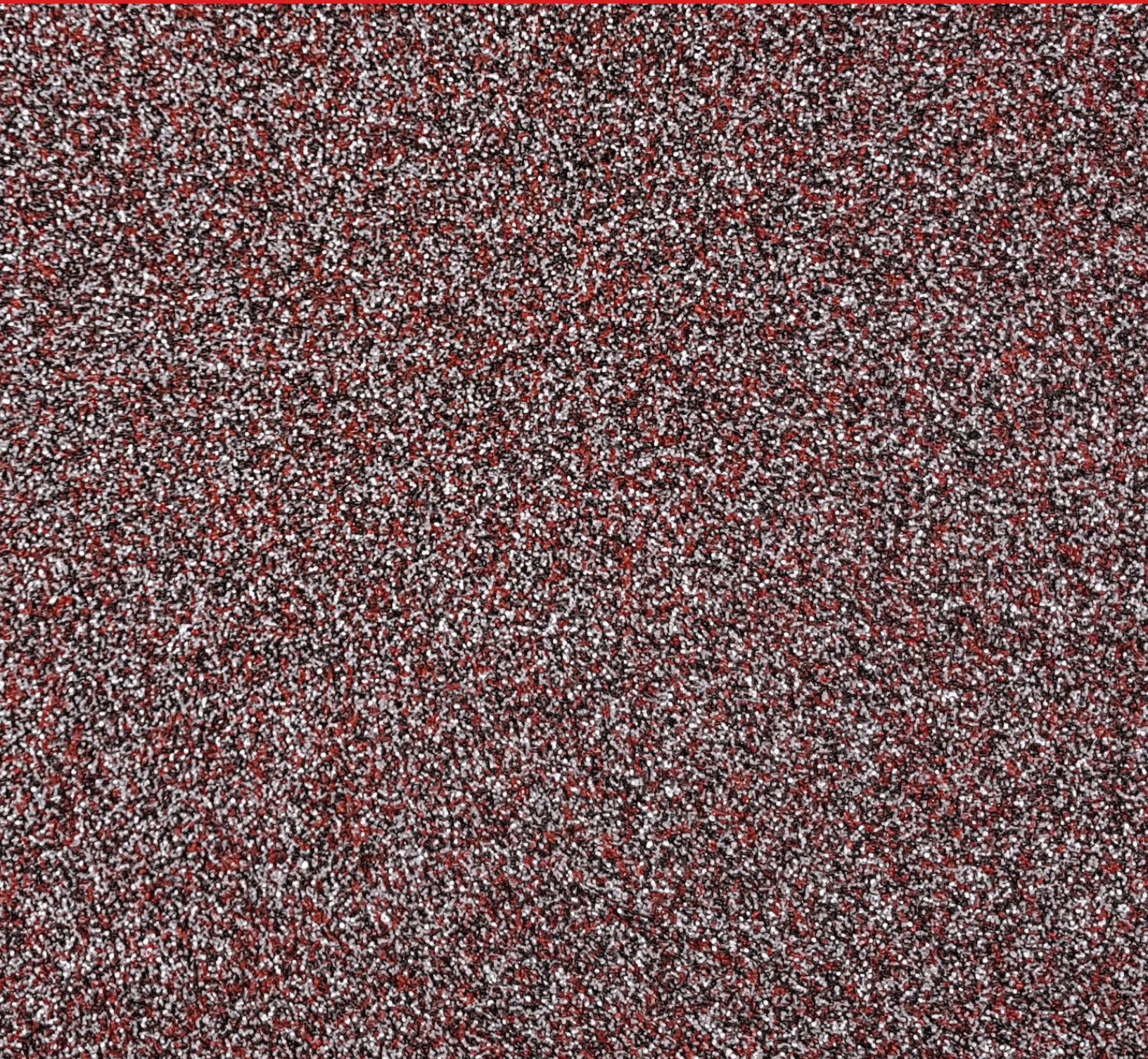




ColorQuartz Flooring Systems





System Description

ColorQuartz coating systems are decorative aggregate broadcast flooring. The ColorQuartz aggregate come in standardized sizes. The ColorQuartz can be custom blended to create unique coating systems. This system can be installed as either a single or double broadcast, depending on preference. ColorQuartz are available in 3 different Grades that each have unique attributes. ColorQuartz 0121 is best for indoor use, ColorQuartz 0122 is stable under sunlight, and ColorQuartz 0123 is the best decorative aggregate system choice for areas exposed to chemicals.

Application Summary

ColorQuartz aggregates are broadcast by hand or by pneumatic blow gun/hopper as indicated in the Technical Data Sheet "Decorative Broadcast Quartz".

Common Applications

Bathrooms, locker rooms, warehouse, break rooms, clean rooms, restaurants, dining areas, hospitals, operating rooms, lobby, pharmacy, classrooms, pool decks, pool houses

SINGLE BROADCAST



ColorQuartz Flooring Systems

SYSTEMS



System Options

ColorQuartz Grades: 0121 (Indoor), 0122 (UV Resistant), 0123 (Chemical Resistant)

Broadcast: Single or Double

1st Broadcast Base Coat: LiquaTile 1184 (pigmented) or DecoFX 1110 (clear)

Sealer Coat: DecoFX 1110 or EnduraShield 2254 (Improved Scratch & UV Resistant)

Texture

Varies with Flood Coat and Sealer Coat thicknesses

Components

Primer: BondTite 1101

Base Coat: LiquaTile 1184 or DecoFX 1110

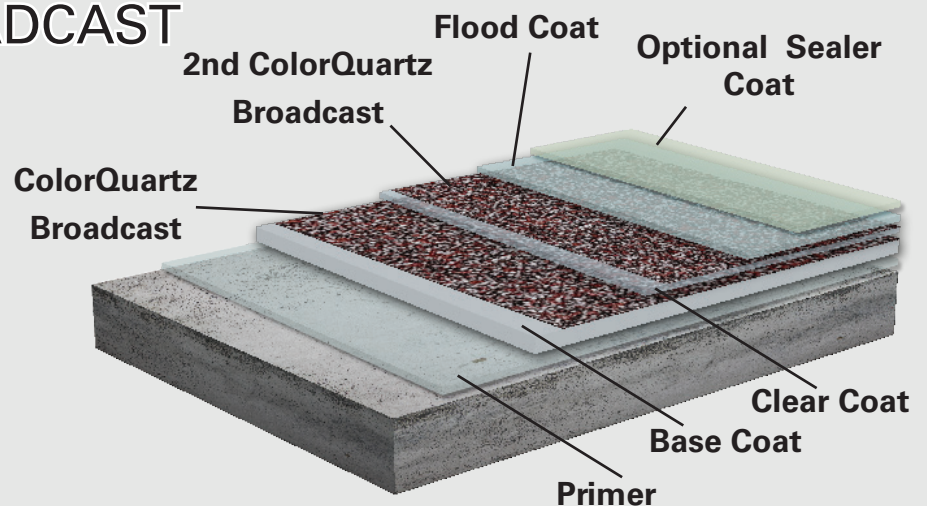
Broadcast: ColorQuartz

Clear Coat: DecoFX 1110 (for double broadcast)

Flood Coat: DecoFX 1110 or EnduraShield 4104

Optional Sealer Coat: EnduraShield 2254 or EnduraShield 4104

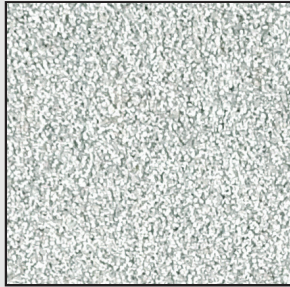
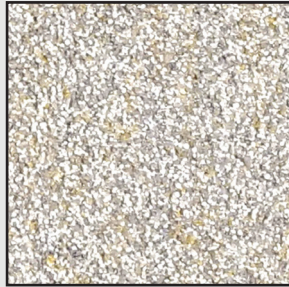
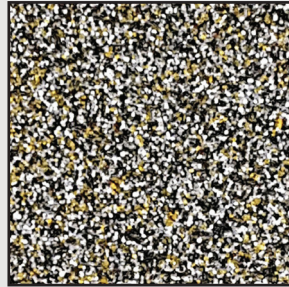
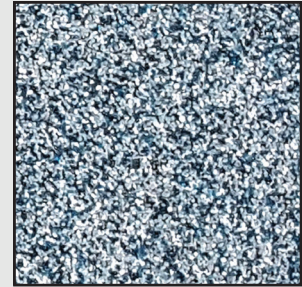
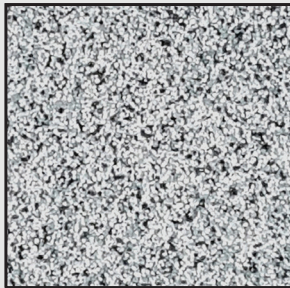
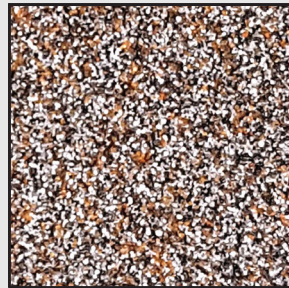
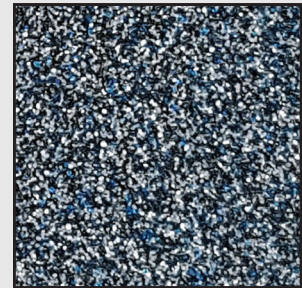
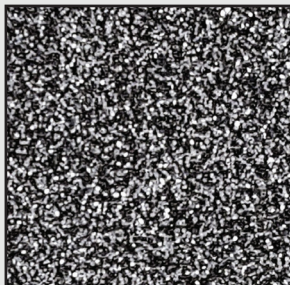
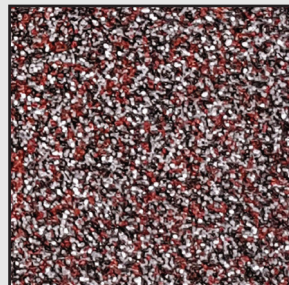
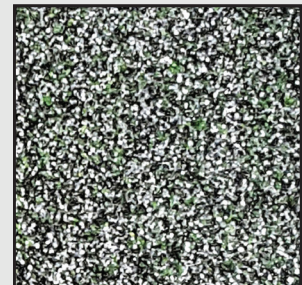
DOUBLE BROADCAST



COLORS

DecoFlakes are available in a variety of color and size... **See Back Page**

ColorQuartz 0121-400 & 0122-400 Blends

**Coastline Mist****Gray Sandstone****Medium Xenolith****Seafoam Blue****Crushed Granite****Light Sandalwood****Autumn Pepper****Midnight Sky****Slate Steel****Speckled Caramel****Crimson Haze****Forest Moss**

Color charts have been optimized to show colors as accurately as possible. Due to screen and printing limitations, you should consult your local Wolverine Coatings Corporation representative when color is critical or if custom blends or matching is desired.

"Big company" capabilities with "small company" personalized service.

**Wolverine Coatings Corporation**

5969 Highway 221 | Roebuck SC, 29376

Tel: (864) 587-3144 | Fax: (864) 587-3147

E-mail: Sales@WolverineCoatings.comWolverineCoatings.com